



Hamilton Crescent, Palmers Green, London, N13  
Chain Free £699,995 Freehold

**Anthony Webb**  
ESTATE AGENTS

# Hamilton Crescent, Palmers Green, London, N13

Four bedroom Edwardian terrace house offering 1400sq ft of living space over three bright and airy floors with fantastic views over the New River. The property offers great potential to update and create a wonderful family home.

Hamilton Crescent is a popular residential turning off Hazelwood Lane within a few minutes walk of Green Lanes shops, restaurants, bus routes and Palmers Green mainline station into Moorgate. There are numerous green spaces/walks within easy reach including The New River, Hazelwood recreation ground and Broomfield Park. Hazelwood primary school is also a few minutes walk away.

Porch and front door leading to Hallway • Dining room to front with bay window, feature fireplace and original ceiling features • Living room to rear with feature fireplace and doors to garden • Kitchen with breakfast bar and door to garden • Two good size double bedrooms with fitted wardrobes • Roof terrace with views over the New River from rear bedroom • Single bedroom with storage cupboard/shelves • Modern family bathroom • Double bedroom in converted loft with eaves storage and en-suite shower room • South east facing rear garden measuring 35ft x 19ft.

Enfield Council Tax Band E

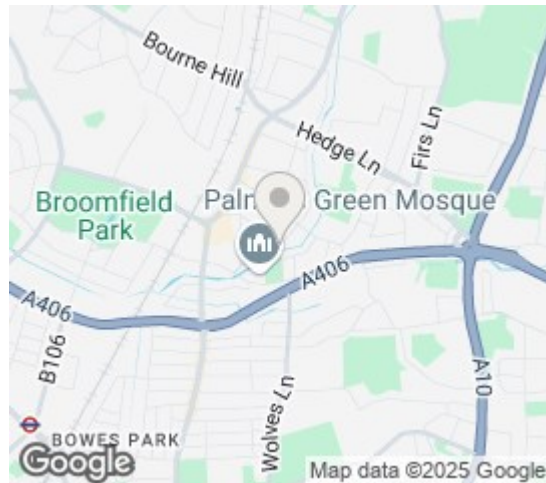
- Four bedrooms
- Edwardian terrace house
- Two receptions
- Kitchen
- Two bath/shower rooms
- Double glazing/gas central heating
- Roof terrace with views over the New River
- Front and rear gardens





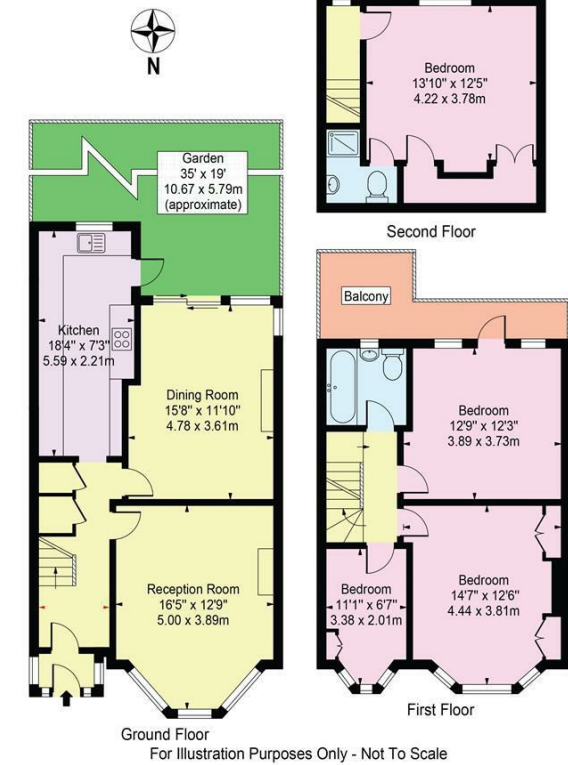
# Hamilton Crescent Palmers Green London N13 5LW

Tenure: Freehold  
Gross Internal Area: 1400.00 sq ft



Energy Efficiency Rating		Current	Potential
Very energy efficient - lower running costs			
(92 plus) <b>A</b>			
(81-91) <b>B</b>			
(69-80) <b>C</b>			
(55-68) <b>D</b>			
(39-54) <b>E</b>			
(21-38) <b>F</b>			
(1-20) <b>G</b>			
Not energy efficient - higher running costs			
<b>England &amp; Wales</b>		EU Directive 2002/91/EC	
Environmental Impact (CO <sub>2</sub> ) Rating		Current	Potential
Very environmentally friendly - lower CO <sub>2</sub> emissions			
(92 plus) <b>A</b>			
(81-91) <b>B</b>			
(69-80) <b>C</b>			
(55-68) <b>D</b>			
(39-54) <b>E</b>			
(21-38) <b>F</b>			
(1-20) <b>G</b>			
Not environmentally friendly - higher CO <sub>2</sub> emissions			
<b>England &amp; Wales</b>		EU Directive 2002/91/EC	

Hamilton Crescent, N13 5LW  
Approx. Gross Internal Area 1400 Sq Ft - 130.06 Sq M



This floor plan should be used as a general outline for guidance only and does not constitute in whole or in part an offer or contract. Any intending purchaser or lessee should satisfy themselves by inspection, searches, enquiries and full survey as to the correctness of each statement. Any areas, measurements or distances quoted are approximate and should not be used to value a property or be the basis of any sale or let.

Property particulars as supplied by Anthony Webb Estate Agents are set out as a general outline in accordance with the Property Misdescriptions Act (1991) only for the guidance of intending purchasers of lessees, and do not constitute any part of an offer or contract. Details are given without any responsibility, and any intending purchasers, lessees or third parties should not rely on them as inspection or otherwise as to the correctness of each of them. We have not carried out a structural survey and the services, appliances and specific fittings have not been tested. All photographs, measurements, floor plans and distances referred to are given as a guide only and should not be relied upon for the purchase of carpets or any other fixtures statements or representations of fact, but must satisfy themselves by or of fittings, gardens, roof terraces, balconies and communal gardens as well as tenure and lease details cannot have their accuracy guaranteed for intending purchasers. Lease details, service ground rent (where applicable) are given as a guide only and should be checked and confirmed by your solicitor prior to exchange of contracts. no person in the employment of Anthony Webb has any authority to make any representation or warranty whatever in relation to this property.

348 Green Lanes, Palms Green, London N13 5TJ  
020 8882 7888  
palmsgreen@anthonywebb.co.uk  
anthonywebb.co.uk

**Anthony Webb**  
ESTATE AGENTS